A colorful illustration featuring a large sunflower on the right and a dandelion seed head on the left. The sunflower has bright yellow petals and a dark brown center. The dandelion seed head is green and yellow. In the top left corner, several dandelion seeds are shown floating in the air. The background is a blue sky with white clouds. The ground is dark brown soil. A yellow rectangular box with rounded corners is centered in the image, containing text.

What can you remember  
from Year 2 about plants?  
Talk to someone in your  
house.



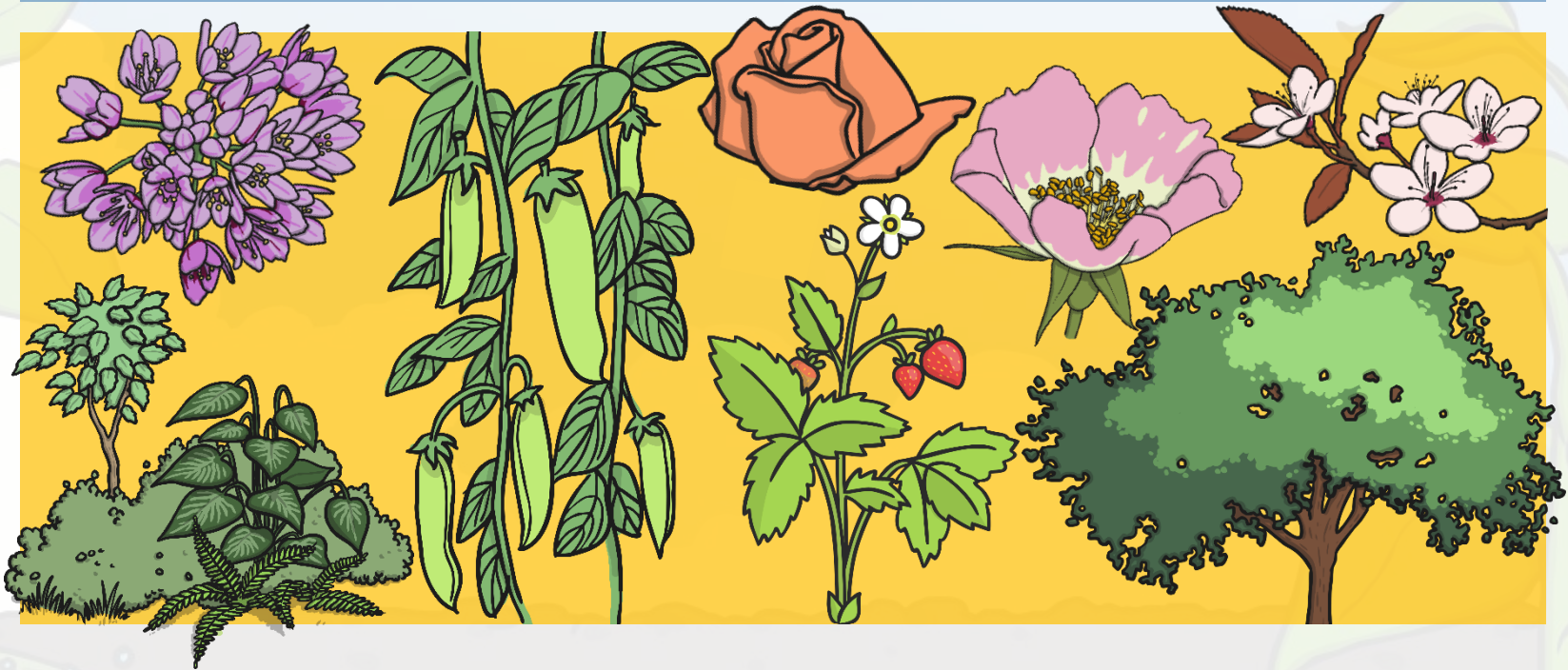
# Plants!

We are going to be learning about plants.

Do you recognise any of these plants?

Do you know what the different parts of the plants are called?

Have you seen any plants in your garden or on walks? Do you know their names?



# Lesson 1 - Parts of a Plant

Plants have different parts that do different jobs.

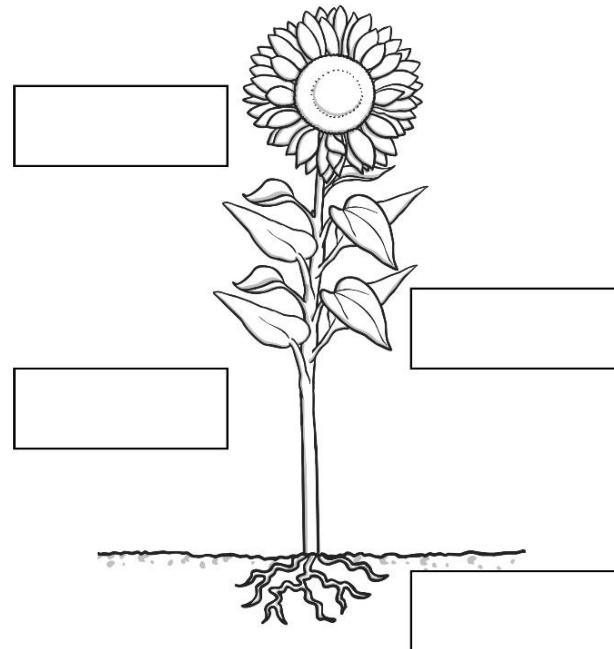
Do you know the names of the different parts of a plant?

Have a think and see if you can remember these 4 main parts of a plant. Write them on a scrap piece of paper.

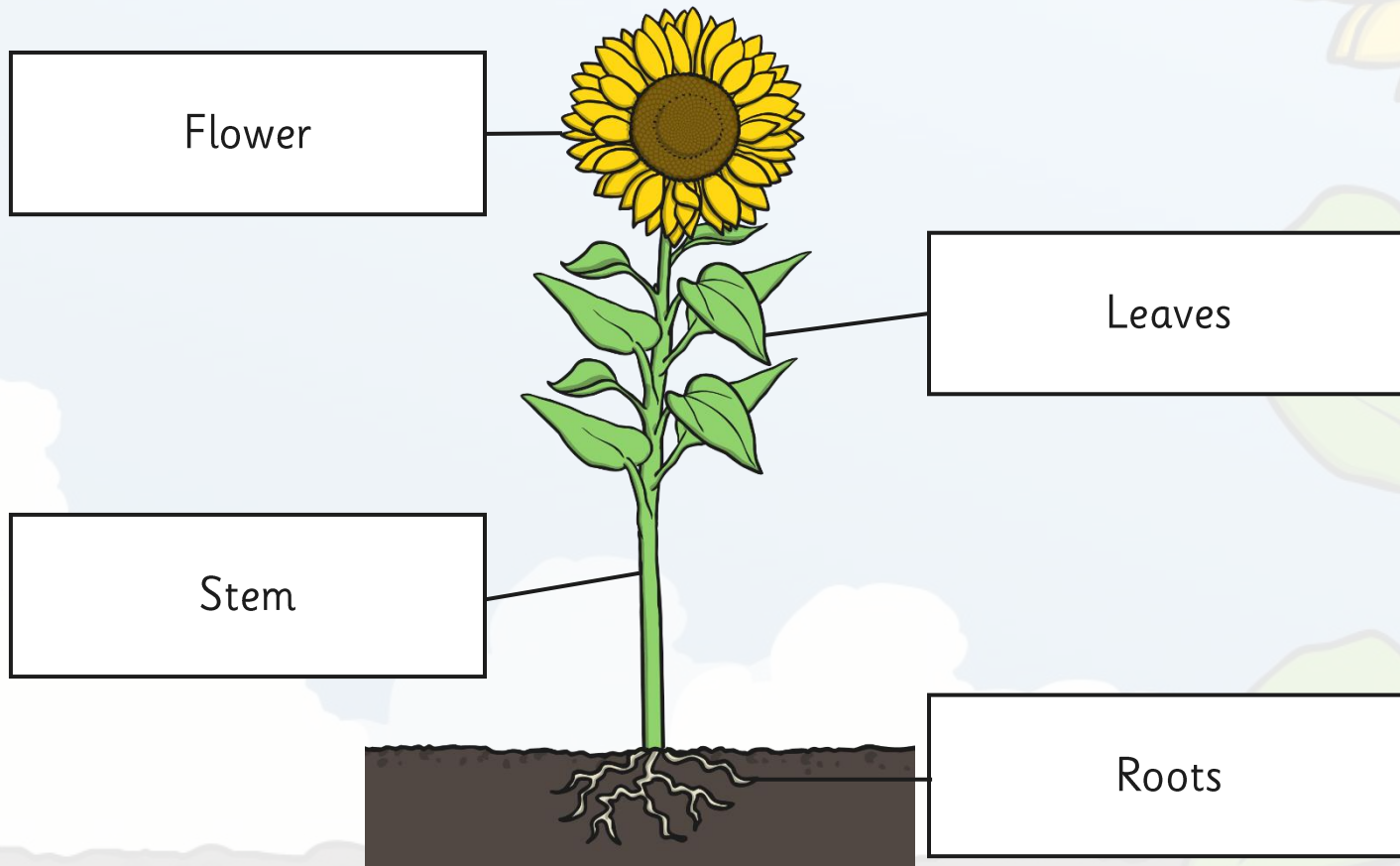
Can you remember what their jobs are?

## Parts of a Plant Labelling

Label the parts of the plant and then draw lines to connect the labels to the right part.



# Parts of a Plant: How Did You Do?





# What Jobs Do They Do?



## Roots

Where do we find the roots of a plant?

They grow underneath a plant, below the surface of the soil.

Roots are usually long and are covered in small hairs.

What do you think their jobs are?

The roots anchor the plant in the ground.

They absorb water and nutrients from the soil.

# What Jobs Do They Do?



## Stem or Trunk

### What is a stem or trunk?

Branches, leaves and flowers grow from the stem or trunk.

A trunk is woody, and often has a layer of bark around it.

### What job does it do?

The stem or trunk holds the plant up.

It also carries water and nutrients from the roots to the leaves.



# What Jobs Do They Do?



## Leaves

What job do leaves do?

The leaves make food for the plant using sunlight and carbon dioxide from the air.

Photo courtesy of leaf watoru @flickr.com) - granted under creative commons licence - attribution



# What Jobs Do They Do?



## Flowers

Do you know what the flower's job is?

Flowers are brightly coloured to attract insects and birds.

The insects carry pollen to other flowers.

Flowers use the pollen to make seeds to grow new plants.

# Why are these parts important?

These roots, stem and leaves play a very important role in keeping the plant or flower alive. They help the plant to move water to all the parts of a plant to keep it healthy and living.

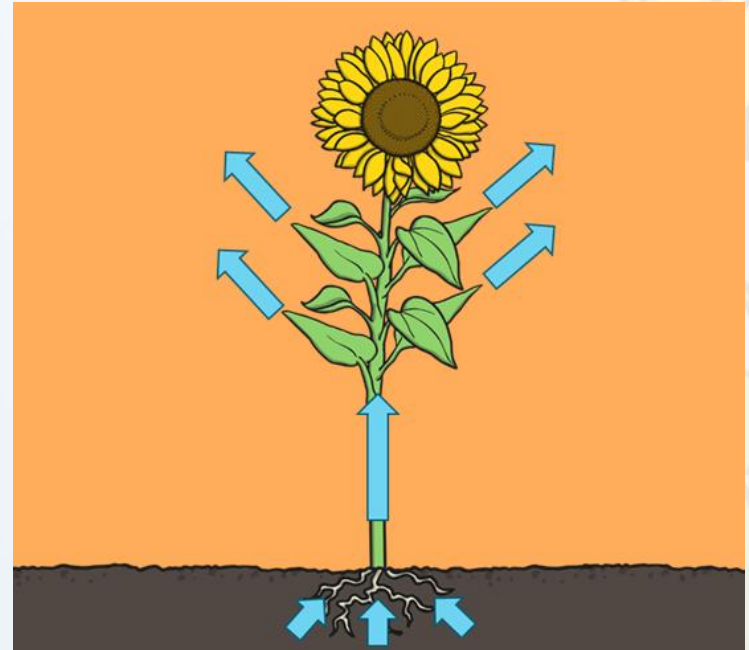
The process is called **water transportation!**



# Water Transportation

This is the process of water moving through a plant.

1. The root absorbs water from the soil.
2. The water moves up the stem and then transports the water to the leaves.
3. When the plant is full of water, the water evaporates from the leaves when the sun shines.
4. This evaporation at the leaves causes the roots and stem to suck up more water to move through the plant. The water is sucked up the stem like water being sucked up through a straw.



Can you act this out using actions, sound effects and explaining the process?

# Experiment to show water transportation

There is an experiment you can do to see how water is transported through plants.

If you want, you can have a go at home and see what happens.

You will need:

- Celery or a flower (with no roots)
- Cup
- Water
- Food colouring

Here are some instructions to show you how to conduct your experiment.

<http://www.teaching-tiny-tots.com/toddler-science-celery-experiment.html>



# Videos to show experiment:

If you can't do this experiment at home, don't worry. Here are some videos that show you the experiment.

<https://www.bbc.co.uk/teach/class-clips-video/science-ks1-ks2-ivys-plant-workshop-how-does-water-get-from-the-roots-to-the-leaves/zdtfj hv>

<https://www.youtube.com/watch?v=KIug9Foou3s>

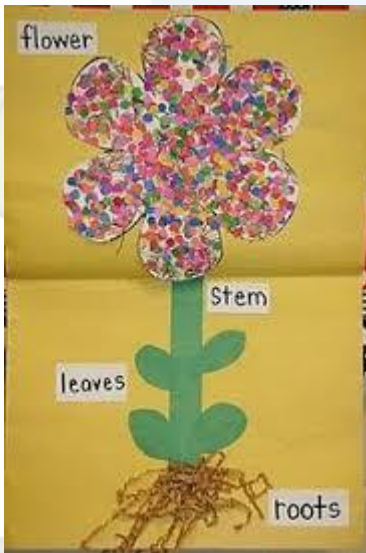
## Things to think about:

- why did the top of the plant change colour?
- what happened to the water level or the plant and why?
- How does this link to water transportation? Use your knowledge to explain.

# Plant collage!

Now, your task is to create a collage of a flower and label the 4 key parts. Maybe you could write about water transportation too.

You can choose what you make your collage with. It may be tissue paper, recycled materials, things from outside or paint. Try to be as creative as possible! Here are some examples to help you.





# Test yourself - What Can You Remember?



Look at these pictures of the different parts of a plant.  
Use your collage to talk to someone in your house about what you can remember about the jobs of each part.

