

Fantastic Flowers





Aim

- I can name the different parts of the inside of a flower and explain their role.

Success Criteria

- I can identify the different parts of a flower.
- I can explain what each part of a flower does.

What is a Flower?



Have you ever wondered why plants have flowers?

You have probably all seen flowers before.

But do you know what the different parts of a flower are for?

This lesson will help you find out!



Photo courtesy of Balaji Photography - 2.6 Million Views and Growing (@flickr.com) - granted under creative commons licence — attribution

What is reproduction and why is it important for plants?

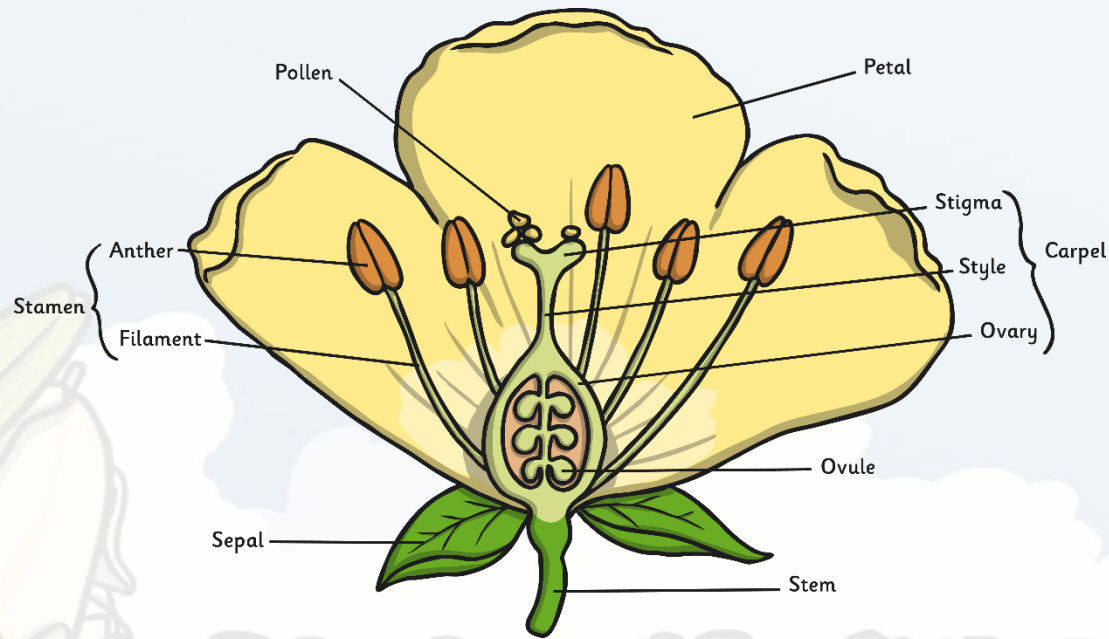
Reproduction is the process where a living thing creates a copy or likeness of itself.

- Reproduction is important for all living things, both plant and animal.
- If a species doesn't reproduce it will become extinct and will no longer live.
- All adult species eventually die, so it is important to reproduce

So plants want to reproduce and make more of the same flower to keep the species alive.

What is a Flower?

The flower's job is to create seeds so that new plants can be grown (reproduce).
Flowers are made up of lots of parts that work together to make seeds and help with reproduction.



Dissect a Flower



Can you spot all the different parts of a flower?

Use a flower and try to split the flower apart carefully identifying the different parts.

Or

Use the paper flower attached on the website and use scissors to cut the flower apart.

Lay them out on your Flower Dissection Mat in the correct places.

Remember to be careful when handling flowers, wash your hands and ask permission before picking.

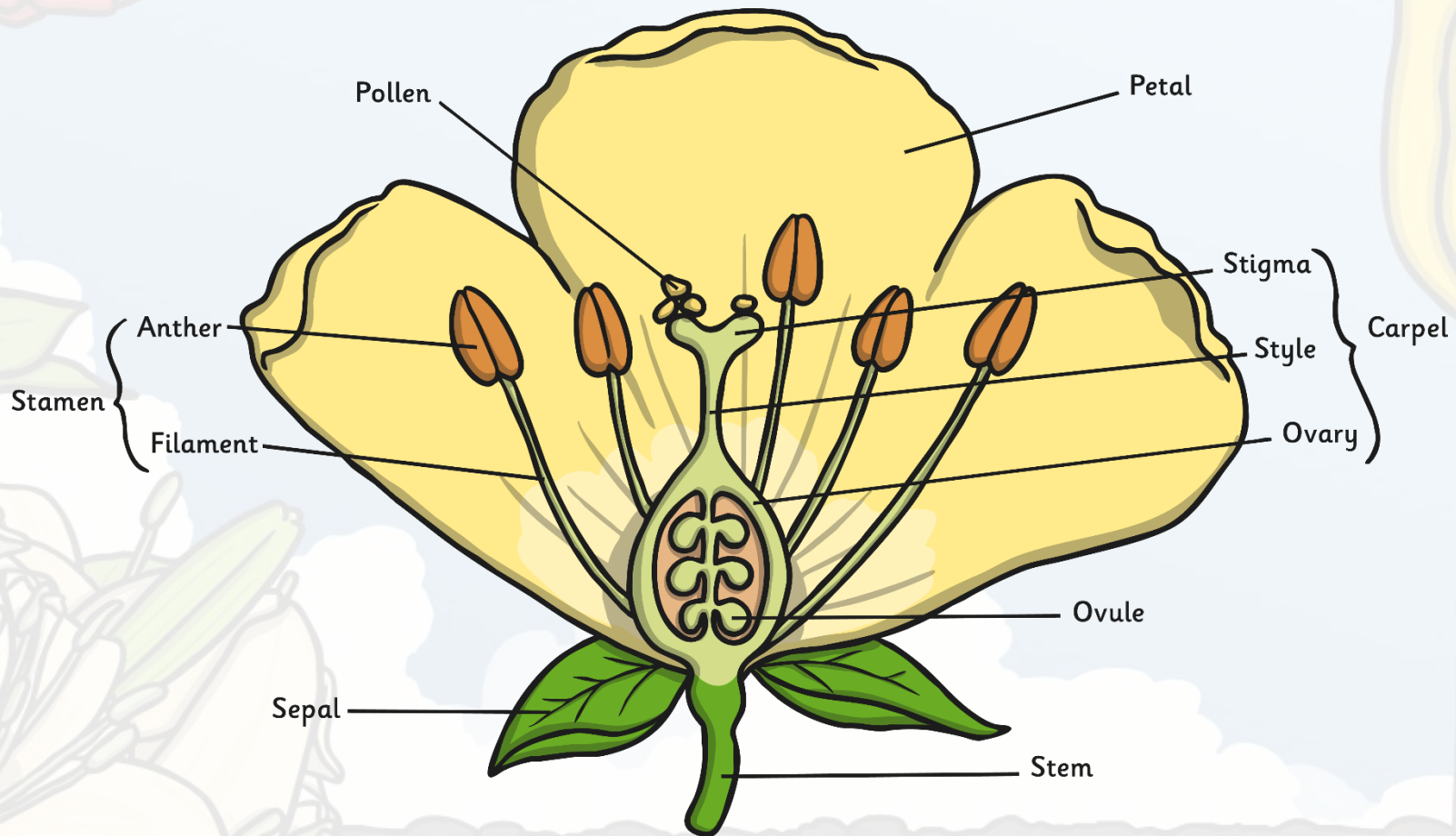
Use the following diagram to help you.

Flower Dissection Mat

Separate your flower into its different parts, then place each part under the correct heading.

Petal	Stamen	Anther
	Stigma	Style
	Ovary	Filament

Dissect a Flower



What Jobs Do They Do?



Each part of the flower has a special job to do in order to make seeds and reproduce.

The video on the website below will help you remember the different parts of the flower. Try to remember what each part does.



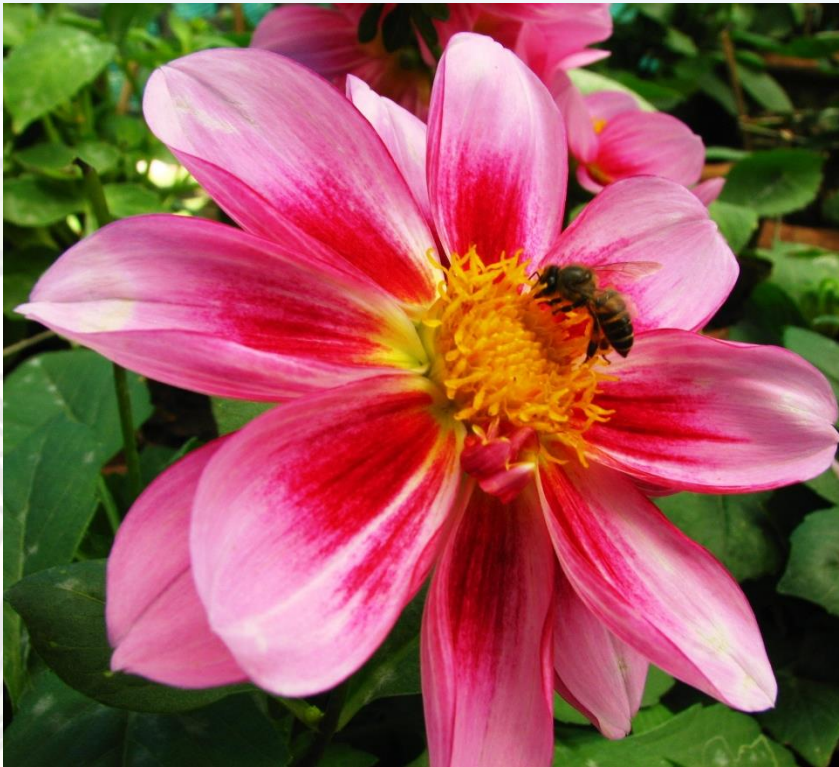
Click to go to the video.

Also, here's a game to help you learn the different parts.

<https://www.sciencekids.co.nz/gamesactivities/lifecycles.html>

Pollination and Fertilisation

Pollination occurs when pollen from the anther is transferred to the stigma.



Insects like bees and butterflies are attracted to the bright colours of the petals and the sweet scent of the flower.

They visit the flower to drink a sweet liquid called nectar that's made in the nectaries.

Pollination and Fertilisation

When an insect goes into the flower to drink the nectar, some grains of pollen brush off the anthers onto their body.

When the insect visits another flower for more nectar, the grains of pollen transfer from the insect's body to the sticky stigma of the new flower.
This is pollination.



Watch this video to help you understand:

https://www.youtube.com/watch?time_continue=62&v=j-S5ui9Us7U&feature=emb_title

Pollination and Fertilisation

The pollen on the stigma then travels down the style towards the ovary.



Photo courtesy of Denise Cross Photography (@flickr.com) - granted under creative commons licence - attribution

Pollination and Fertilisation

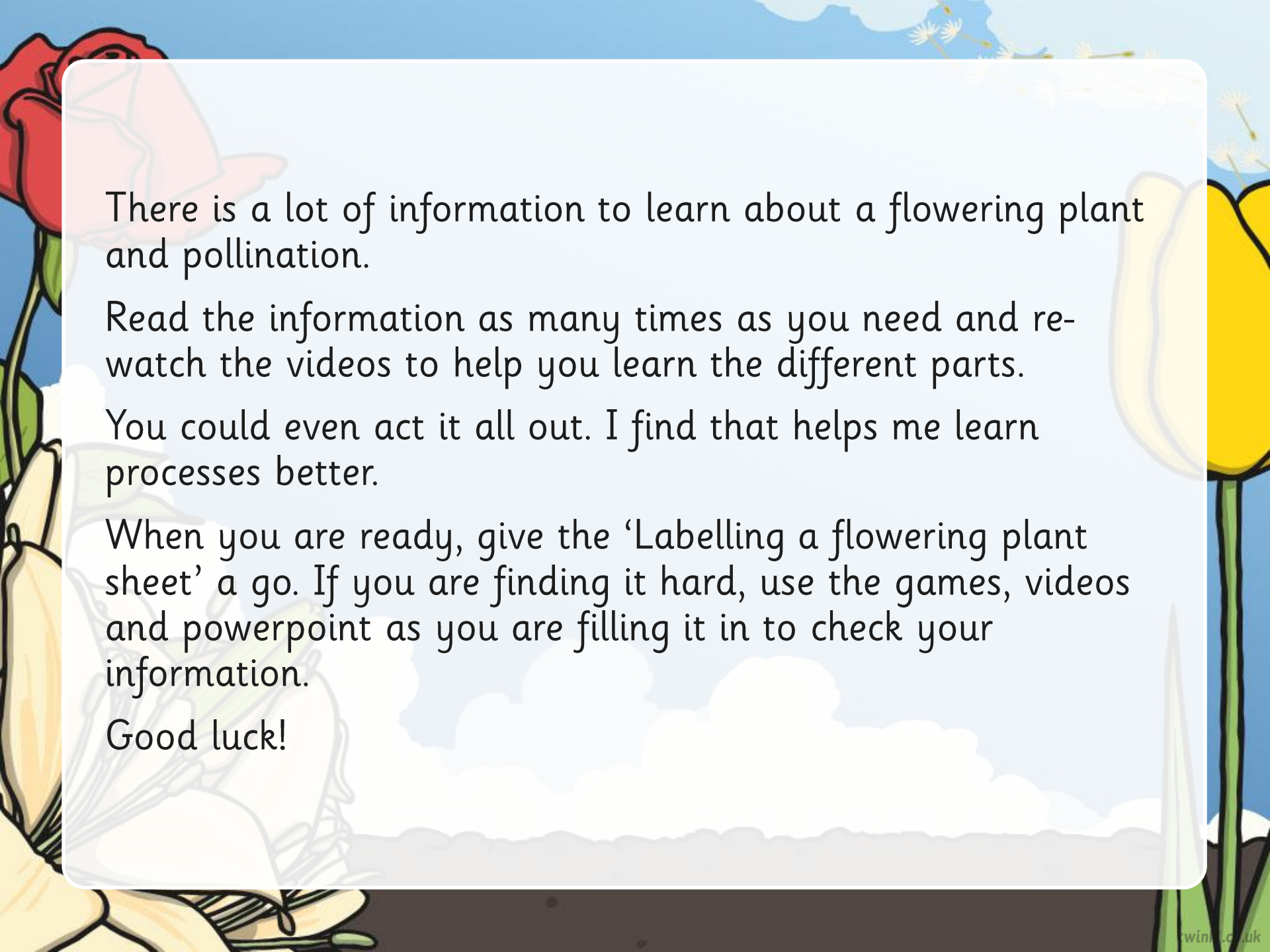
Once it reaches the ovary, the pollen joins with an ovule.
The ovule can then grow into a seed. This is known as fertilisation.



Poppy seeds
grow inside
the enlarged
ovary.



Pea seeds
grow inside
the ovary,
or the pea
pod.



There is a lot of information to learn about a flowering plant and pollination.

Read the information as many times as you need and re-watch the videos to help you learn the different parts.

You could even act it all out. I find that helps me learn processes better.

When you are ready, give the 'Labelling a flowering plant sheet' a go. If you are finding it hard, use the games, videos and powerpoint as you are filling it in to check your information.

Good luck!