



Miss Whitney's Phonics Group

Hello everybody,

We are carrying on with **Phase 5** in phonics this week. Remember this is the phase when we start to look at alternative spellings for the same sound.

Back in Phase 3 we learnt '**er**' like '**f****er**n' and '**f**arm**er**' and this week we are going to look at the alternative spelling for that sound which is '**ir**' like '**g****ir**l'.

Can you spot any patterns to help you with knowing when to use the '**er**' spelling and when to use the '**ir**' spelling?

Read the words on this PowerPoint, have a go at the activity and don't forget to practice the words on Spelling Shed!





Before we start, how much can you remember from last time? We were looking at '**ow**' like '**cow**', '**ou**' like '**house**' and '**ie**' like '**tie**'.

Write the words to match these pictures.





girl



sir



bird



shirt



thirsty



birth



third



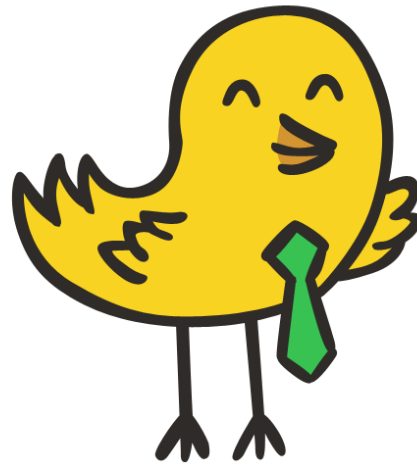
first



thirteen



skirt



THE END