

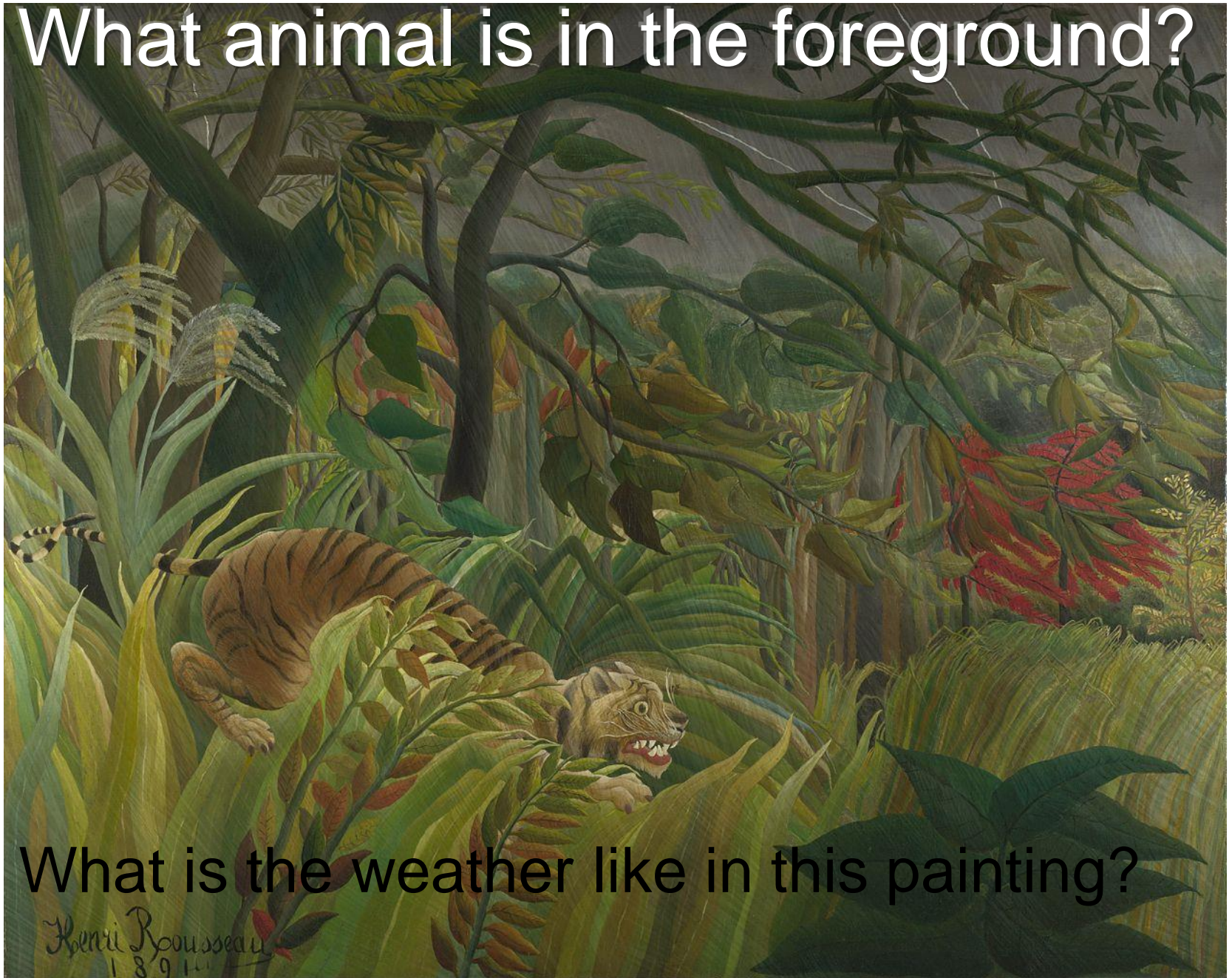
Rousseau jungles



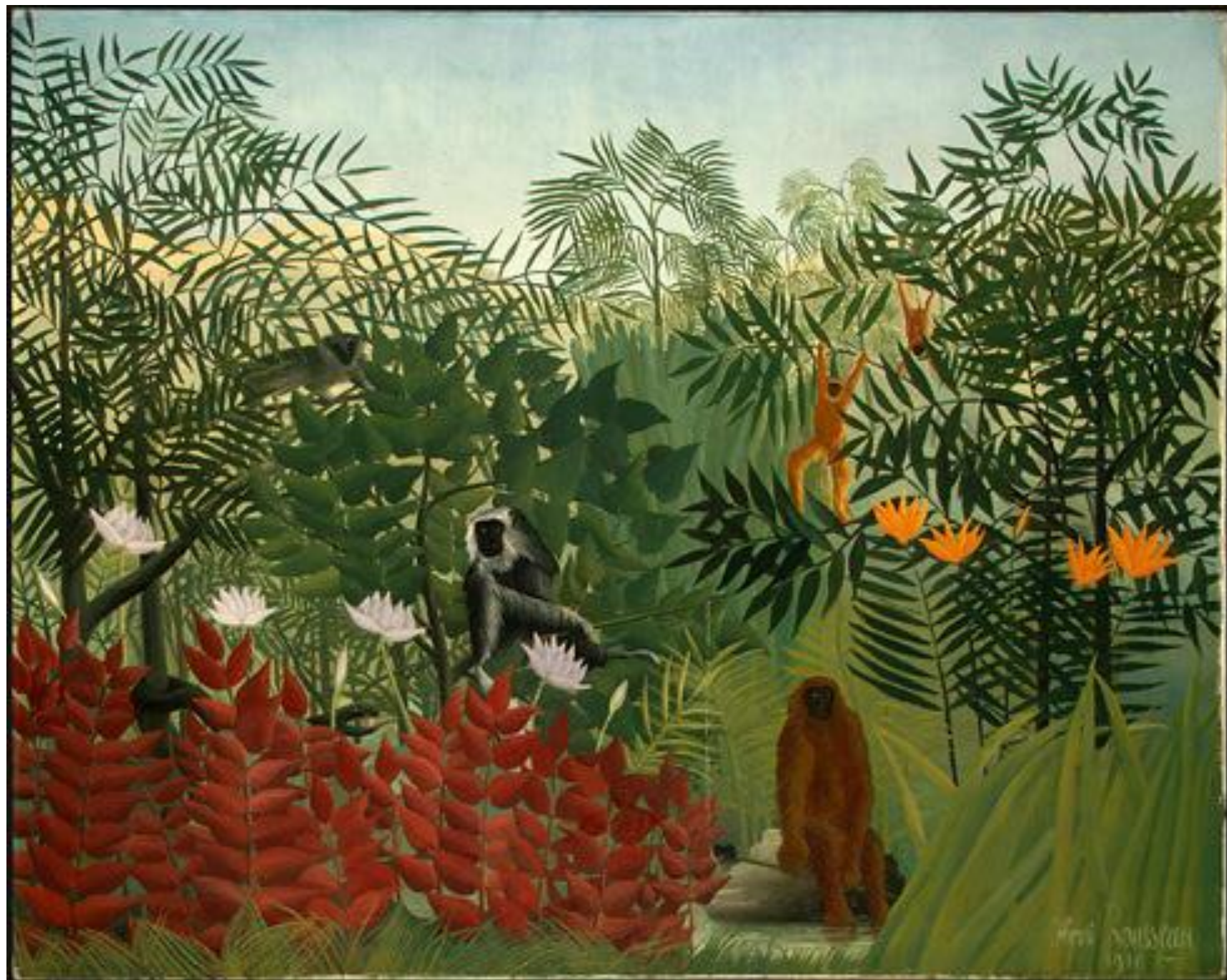
Henri Rousseau 1844-1910

- Henri Rousseau was born in France
- He never had any art lessons and started painting when he was older
- He never visited the jungle!
- He painted house plants and wild flowers for his jungle paintings and often looked at pictures in books

What animal is in the foreground?



What is the weather like in this painting?



What colours can you see in
the real jungle?



Rousseau

- Clear outlines on the grass in the foreground
- Each leaf clearly painted
- What animals can you see?



Are these real jungle plants the
same height?

Rousseau jungle paintings

- He used very simple **pure colours**
- He had very **clear outlines**
- He filled jungle paintings with **animals in the foreground** and **lush green plants in the background**
- He painted **leaves and grass** piece by piece with clear **outlines**
- He often painted huge **over-sized flowers**





Rousseau

- Can you spot the giant sized blue flowers?
- What colour flowers would you paint?
- How tall would they be?

A photograph of a tropical jungle scene. In the foreground, there are large, green, spiky plants, possibly palm fronds. A river or stream flows through the center of the image, reflecting the surrounding greenery. The background is filled with dense, lush tropical vegetation, including various trees and hanging moss. The overall color palette is dominated by different shades of green.

Can you see light and dark in the
real jungle?

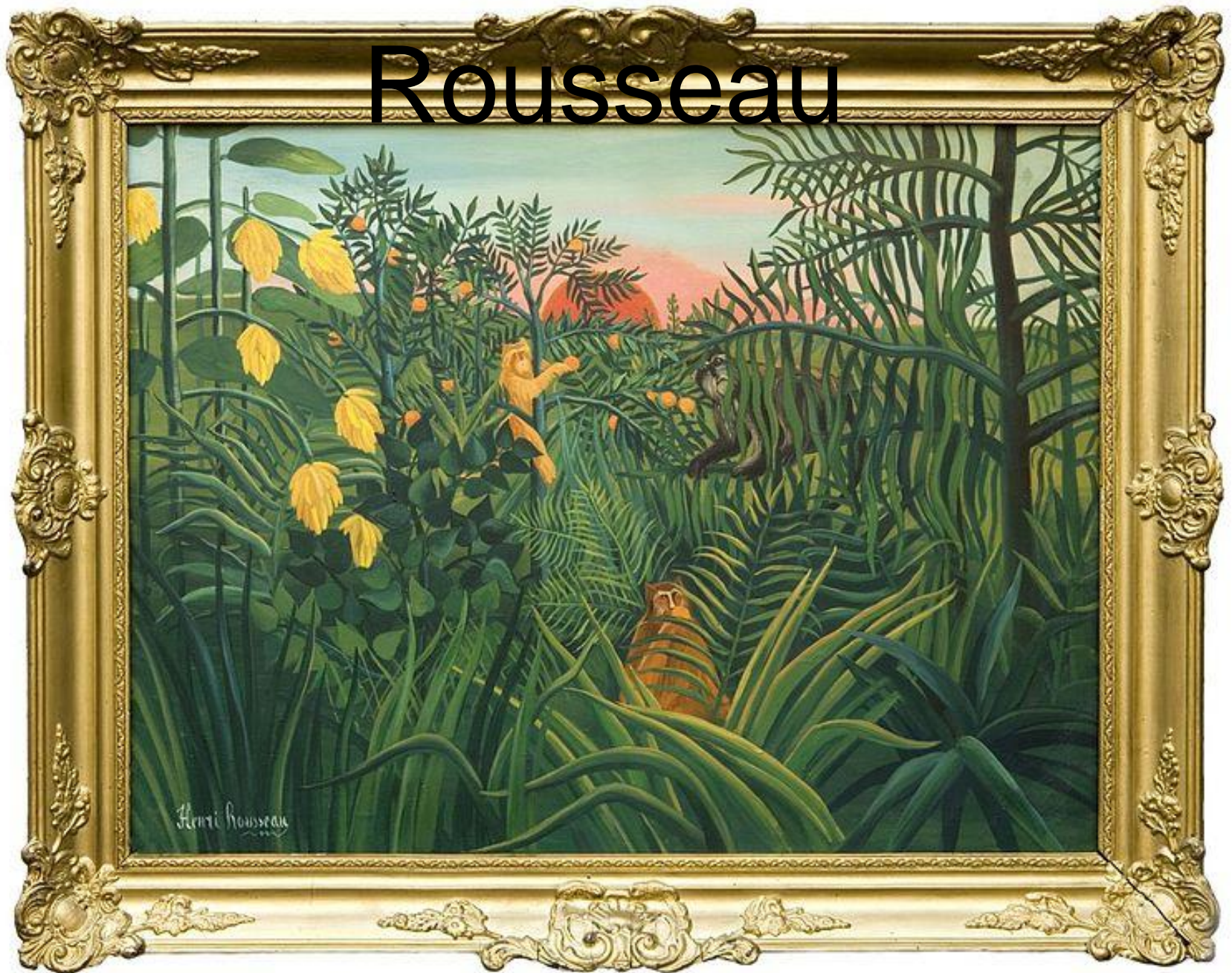
- Is it all the same shade or tint
of green?



Real jungle plants



Rousseau



Main features of Rousseau paintings?

- Remember!!!
- He used very simple **pure colours**
- He had very **clear outlines**
- He filled jungle paintings with **animals in the foreground** and **lush green plants in the background**
- He painted **leaves** and **grass** piece by piece with clear **outlines**
- He often painted huge **over-sized flowers**

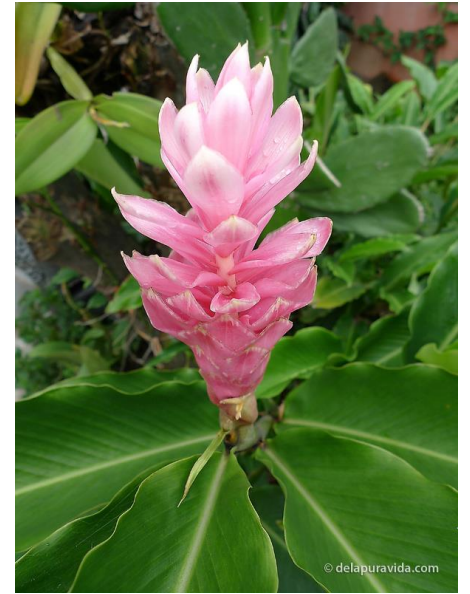
Real rainforest plants







Jungle Flowers







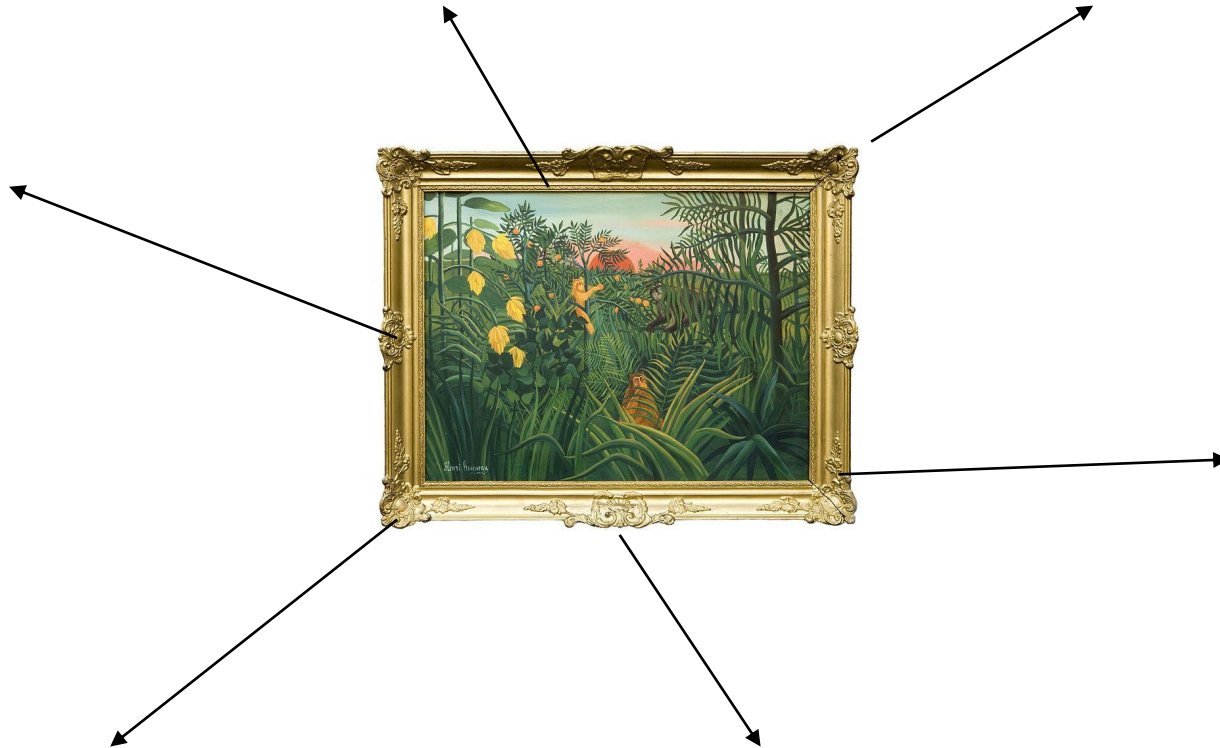
A 5-petal pink flower in the rainforest of Arfak mountains

photo by Charles Roring - 1 September 2011

<http://manokwaripapua.blogspot.com>



Can you create a mindmap showing what Rousseau's paintings were made up of?



Now see if you can work your way through the WILF. There is another document of Henri Rousseau paintings if you would like to print and cut them out to annotate.

WALT: To be able to recognise the artwork of a notable artists

Art WILF: I can explore and analyse the works of Rousseau by:

Bronze: choosing my favourite parts of Rousseau's pictures.

Silver: explaining why I have chosen each picture using artistic language. E.g.: tints, shades, shadows..

Gold: comparing the different pictures I have chosen.

Challenge: Using Rousseau's pictures think of what sort of picture you will make. What or who will you include?