

# Miss Handley and Miss Anderson's Phonics Groups

Hello everyone,

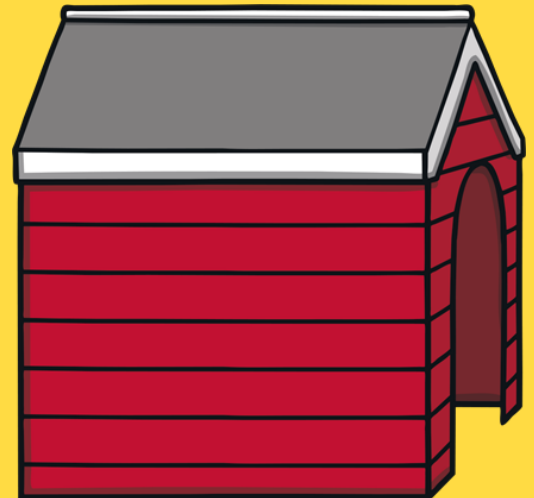
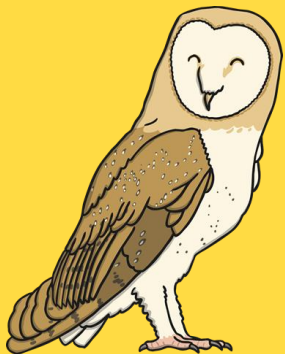
This week we are going to revise our suffixes again. Can you remember what a suffix is? If so, tell an adult! If you aren't sure, you can find out in this PowerPoint.

Once you have completed it, have a go at the suffix spelling activity, you can write the missing answers in your home learning book if you don't have access to a printer.

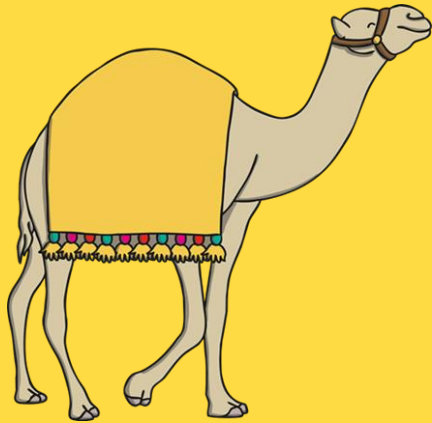
Finally don't forget to log in to Spelling Shed to practice!

Before we start, what can you remember from last week? We were looking at the 'l' word family.

**Write the correct word to match the pictures. Check carefully!**



# Answers



camel



sail



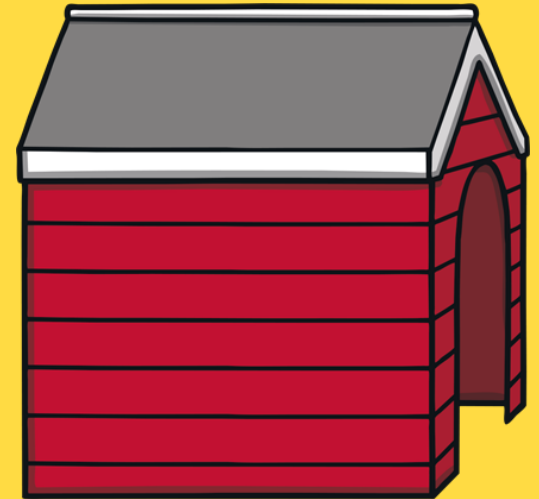
beetle



owl



bell



kennel

# Using the Suffixes -ing, -ed, -er and -est

**LO:** To use the suffixes –ing, –ed, –er  
and –est.

# What is a suffix?

A **suffix** is a group of letters that can be added on to the end of a **root** word to slightly change its meaning.

e.g. **walking**

**Walk** is the root word.

**ing** is the suffix.

The suffix 'ing' is added to the end of verbs to show that something is happening in the present...

e.g. I kick the ball.

I am kicking the ball.



Can you add 'ing' to these words,  
then put them in a sentence?

e.g. walk – I am walking to the shops.

stick	pick	pour
sing	play	say



The suffix 'ed' is added to the end of verbs to show that something has already happened...



Can you add 'ed' to these words,  
then put them in a sentence?

e.g. walk – I walked to the shops.

lick	listen	watch
bang	play	sprint

The suffix 'er' is added to the end of adjectives to compare two things...

e.g. small.

The girl was smaller  
than the boy.



Can you add 'er' to these words,  
then put them in a sentence?

e.g. loud – The children were louder than their teacher.

hard	quiet	bright
dark	high	deep

The suffix 'est' can also be added to the end of adjectives to compare three or more things...

e.g. cold.

Thursday was the coldest day of the week.



Can you add 'est' to these words,  
then put them in a sentence?

e.g. loud – Simon was the loudest in the class.

hard	quiet	bright
dark	high	deep

**THE END**