

Starter

1 more

42

1 less

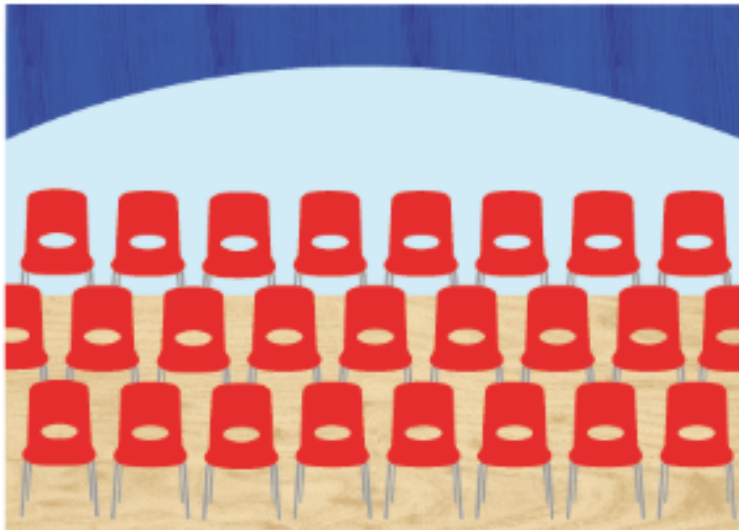
657

181

250

*Which place value column is changing each time?
Does it change if it's a 2 or 3 digit number?*

In Focus



There were 658 chairs in the school hall.
Ruby took 4 chairs away.
How many chairs are there now?

Is this problem addition or subtraction?

How do you know?

What different methods can you show to work it out?

Your friend said that she can use a number line to solve this problem.

658	659	660	661	662			
-----	-----	-----	-----	-----	--	--	--

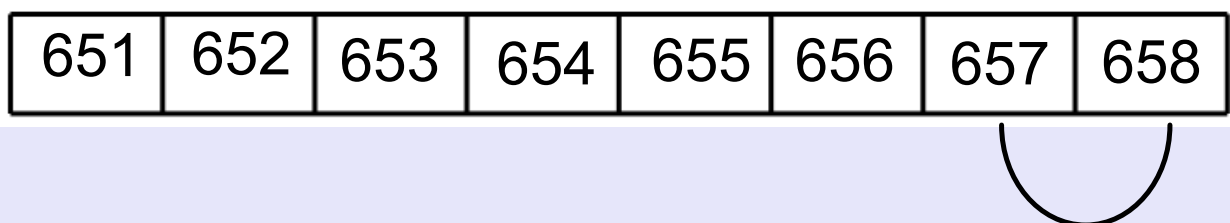
Does this show the correct sum?

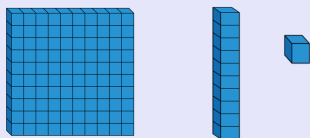
She would start with 658 and count back because it is a subtraction.

$$658-4$$

Can you help her work it out?

Remember because its a subtraction we count the jumps backwards.

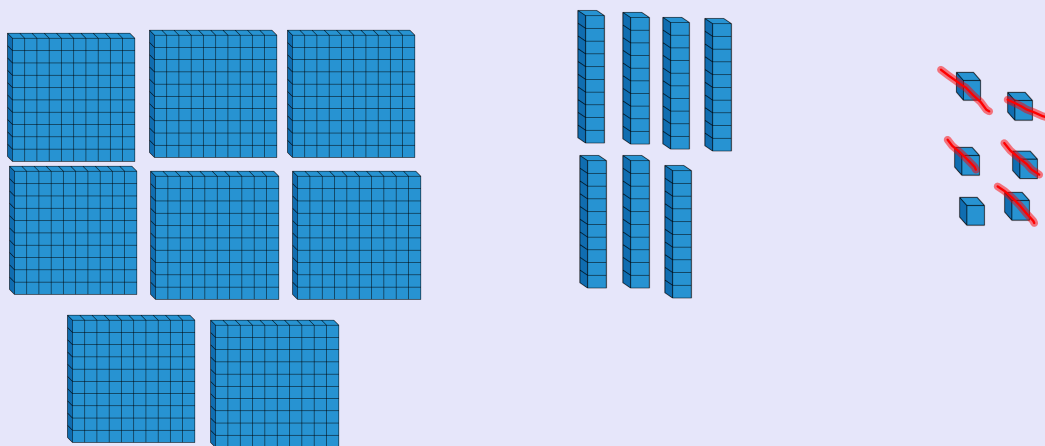




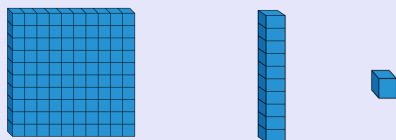
We can use dienes to help us work subtraction sums out too.

Make your starting number then cross off how many you are subtracting.

$$876 - 5$$



What's the answer?



Make some 3 digit numbers using these digits:

8

9

6

7

5

2

3

4

Then can you use the dienes to work them out.

e.g. $798 - 4$

Guided Practice

Subtract.

1

(a) $345 - 1 =$

(b) $345 - 4 =$

2

(a) $209 - 8 =$

(b) $209 - 9 =$

Workbook pages 49 and 50