

# Thursday Phonics

- Today we are looking at /ph/ in 'dol**ph**in' and /wh/ in '**w**heel'.

## Task 1

Look at the 'ph' and 'wh' words on this Power point. Can you read the words? Can you copy them into your book and add sound buttons?

E.g.                      d   o   l   ph   i   n                      wh   ee   l

## Task 2

Read the sentences on this Power point.

## Task 3

Click the link below and play the game. Read the words, did you get them correct?  
[www.ictgames.com/mobilePage/bingoOriginal/index.html](http://www.ictgames.com/mobilePage/bingoOriginal/index.html)

## Task 4

Look at Thursday Task 4 on website. Can you draw the pictures in your book and label them? **Challenge:** Read the story and spot the 'ph' words.



*ph*

Spelling the 'f' sound with 'ph'.

The 'f' sound is usually spelled with just f (or ff after a short vowel) but words from ancient Greek use **ph**.

We can learn to  
read and spell  
words with 'ph' by  
grouping them into  
topics

Read the words

# Animals



ele<sup>ph</sup>a  
nt



dol<sup>ph</sup>i  
n

Words to do with  
writing

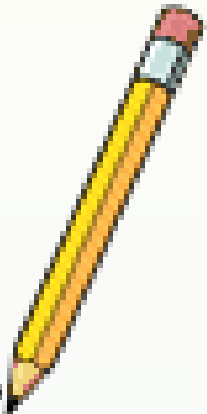
phonic

alphabet

et

phrase

abc



names

Sophie Christopher  
er

Phil

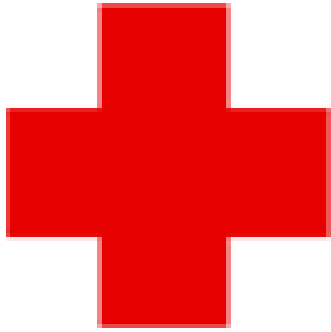
Joseph

\*Capital

letters

for names!

# medical words



pharmacy

pharmaci

physicst

al



wh

'wh' comes at the start  
of a word





whis

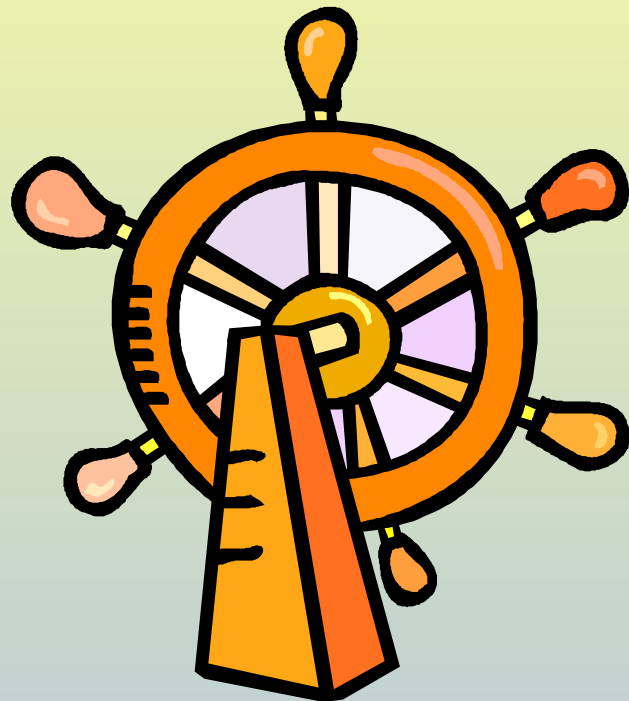
k



whale

whee

1





whea  
t

whistle



**Read the sentences**

There was a white  
whale swimming  
elegantly in the  
water.

Do you prefer a  
dolphin or an  
elephant?



Sophie and Joseph  
are best friends with  
Christopher.

I can see Phil holding  
a whistle.