



# Roman artefacts

Enquiry question: How do we know so much about the Roman way of life?

WALT: Use evidence to ask questions and find answers to questions about the past

WILF: I can use artefacts and my knowledge of the Roman's to answer questions and fill out my grid

Challenge: What would you leave behind to show evidence of your existence? Why?



Today we are  
going to become  
archeologists.  
Can you  
remember what  
these do?



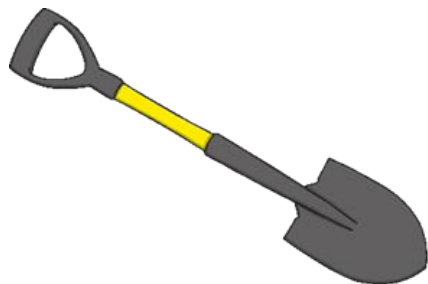




Archaeology is the scientific study of human life through the investigation of man-made objects.

Archaeologists are like detectives: they observe artefacts to discover clues about the person who once owned it. By piecing together the clues, archaeologists can answer questions about how past civilisations lived.

# What does an archeologist need to do their job?



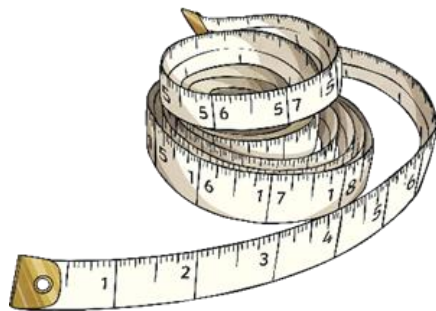
spade



brush



magnifying glass



tape measure



pen



paper

What do you think each tool does?





# Roman artefacts

These Roman artefacts were found on a building site in the north of Britain.

Work has stopped so we can try to find out some more information about them.

Have a look through all the pictures of the artefacts found.





## Questions to think about?

What do you think it is?  
Is it the complete artefact?

What do you think it was  
made from?

Who do you think it belongs  
to?



## Questions to think about?

What do you think it is?  
Is it the complete artefact?

What do you think it was  
made from?

Who do you think it belongs  
to?





## Questions to think about?

What do you think it is?  
Is it the complete artefact?  
What do you think it was made from?  
Who do you think it belongs to?



## Questions to think about?

What do you think it is?  
Is it the complete artefact?  
What do you think it was made from?  
Who do you think it belongs to?





Questions to think about?

What do you think it is?

Is it the complete artefact?

What do you think it was made from?

Who do you think it belongs to?





## Questions to think about?

What do you think it is?  
Is it the complete artefact?  
What do you think it was made from?  
Who do you think it belongs to?





## Questions to think about?

What do you think it is?

Is it the complete artefact?

What do you think it was made from?

Who do you think it belongs to?



## Questions to think about?

What do you think it is?

Is it the complete artefact?

What do you think it was made from?

Who do you think it belongs to?





# Artefact Enquiry Sheet



Drawing of object	Size of Object	What do you think it is? Why?	What do you think it is made from?	Who might have owned it?	Category (tick one)
					<div>weapon<input type="checkbox"/></div> <div>jewellery<input type="checkbox"/></div> <div>personal<input type="checkbox"/></div> <div>accessories<input type="checkbox"/></div> <div>household objects<input type="checkbox"/></div>
					<div>weapon<input type="checkbox"/></div> <div>jewellery<input type="checkbox"/></div> <div>personal<input type="checkbox"/></div> <div>accessories<input type="checkbox"/></div> <div>household objects<input type="checkbox"/></div>
					<div>weapon<input type="checkbox"/></div> <div>jewellery<input type="checkbox"/></div> <div>personal<input type="checkbox"/></div> <div>accessories<input type="checkbox"/></div> <div>household objects<input type="checkbox"/></div>

Choose 3 artefacts from the pictures and fill out the grid.  
Look carefully at the artefacts.



Beaker to drink from



Roman jug



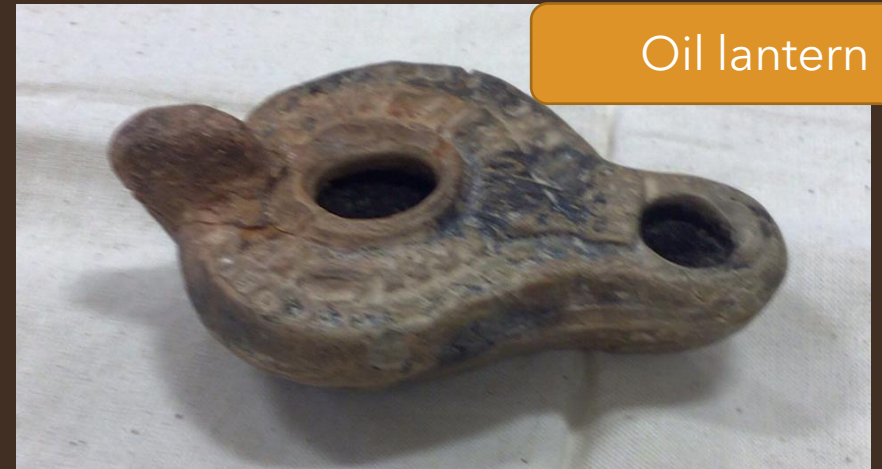
Mortarium  
(paste and mortar to grind down food)



Roman pottery handle



Roman pottery



Oil lantern



Roman coin



Roman pottery