

# Telling the time - Answers

1) Draw the hands on the clock faces



7:40



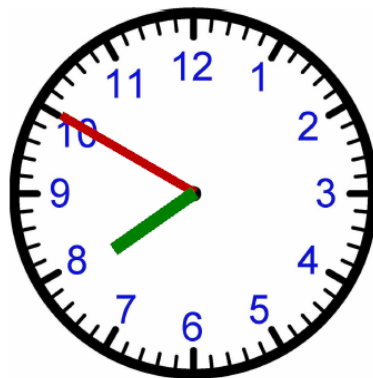
9:25



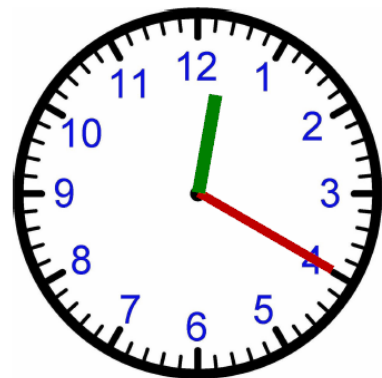
4:10



Five to One



Ten to Eight

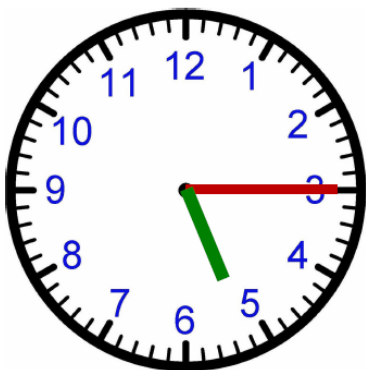


Twenty past Twelve

2) For each of the clocks below, what would a 24 hour digital clock show?

a) If it was am (after midnight but before midday)

b) If it was pm (after midday but before midnight)



a) 05.15

b) 17.15



a) 00.40

b) 12.40



a) 07.05

b) 19.05

3) How much time has elapsed?



Clock A



Clock B

What time is on Clock A ? 7:35

What time is on Clock B ? 10:13

How much time has elapsed  
between Clock A and B ? 2 hrs and 38 mins

1 ) 5:30 P.M. to 7:14 P.M. 1 Hours & 44 Minutes

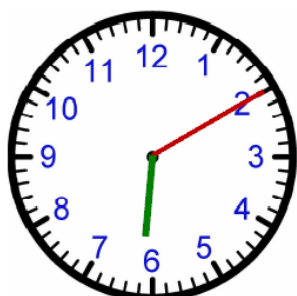
2 ) 9:35 P.M. to 12:15 A.M. 2 Hours & 40 Minutes

3 ) 10:50 P.M. to 3:04 A.M. 4 Hours & 14 Minutes

4 ) 3:50 P.M. to 5:26 P.M. 1 Hours & 36 Minutes

5 ) 10:20 A.M. to 1:32 P.M. 3 Hours & 12 Minutes

4)



What time is on the clock ? 6:10

What time will it be in 3 hours and 47 minutes ? 9:57

What time was it 4 hours and 29 minutes ago ? 1:41

What time will it be in 1 hour and 39 minutes ? 7:49

5) Complete the table below

Start Time	End Time	Elapsed Time
5:50 P.M.	7:34 P.M.	1 Hours & 44 Minutes
1:15 P.M.	2:55 P.M.	1 Hours & 40 Minutes
10:30 P.M.	12:17 A.M.	1 Hours & 47 Minutes