

Can point to where these main points of the clock go?



o'clock

half  
past

quarter past


quarter to

If you think you need more practice telling these times go and complete Maths Bronze worksheet.

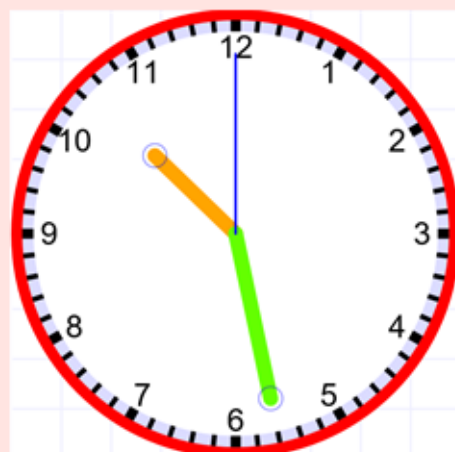
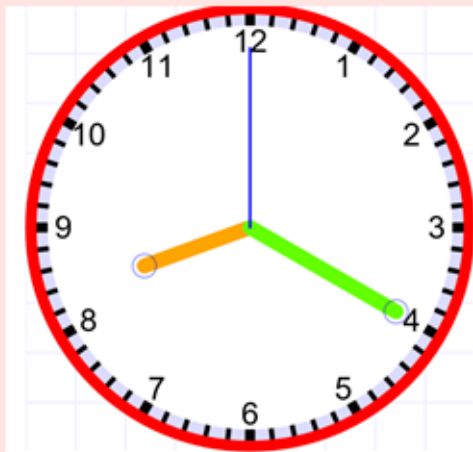
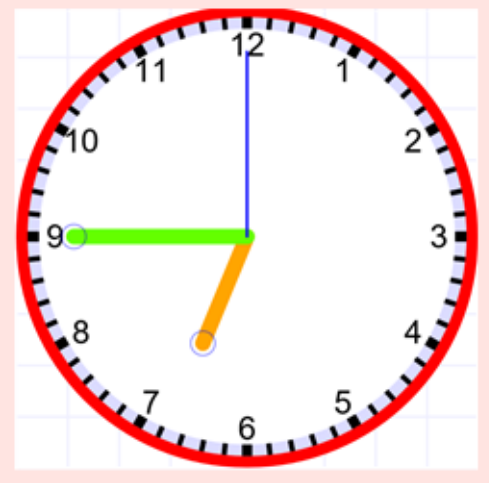
Remember as the minute hand goes around the clock the hour hand moves closer to the next hour.

Follow this link and watch how the hour hand moves around as the minute hand moves around too.

So sometimes the hour hand might be half way between 2 numbers. It is only the next hour when it reaches that number.

 <https://www.visnos.com/demos/clock>

What's the time Mr Wolf?



If you found last weeks work a little bit tricky. There is another practice sheet for you to do, it's called Maths Silver.

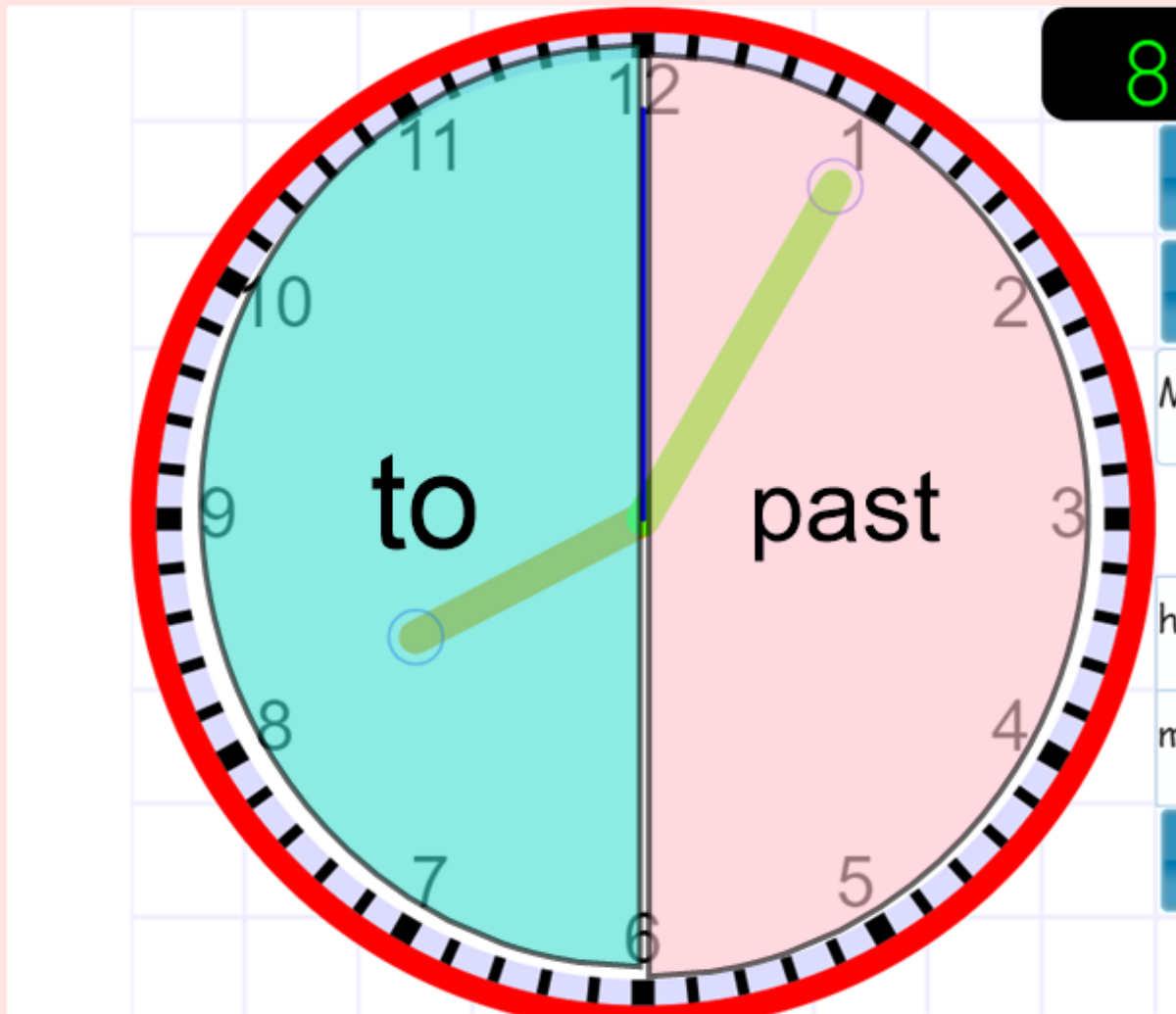
[Extend Page](#)

Last week we were telling the time of how many minutes **past the hour** there was.

There is another way you can tell the time which is where you say how minutes **to (until)** the next hour.

We can split our clock in 2 halves to help us with this.

Let's look at the **past** and **to** side.

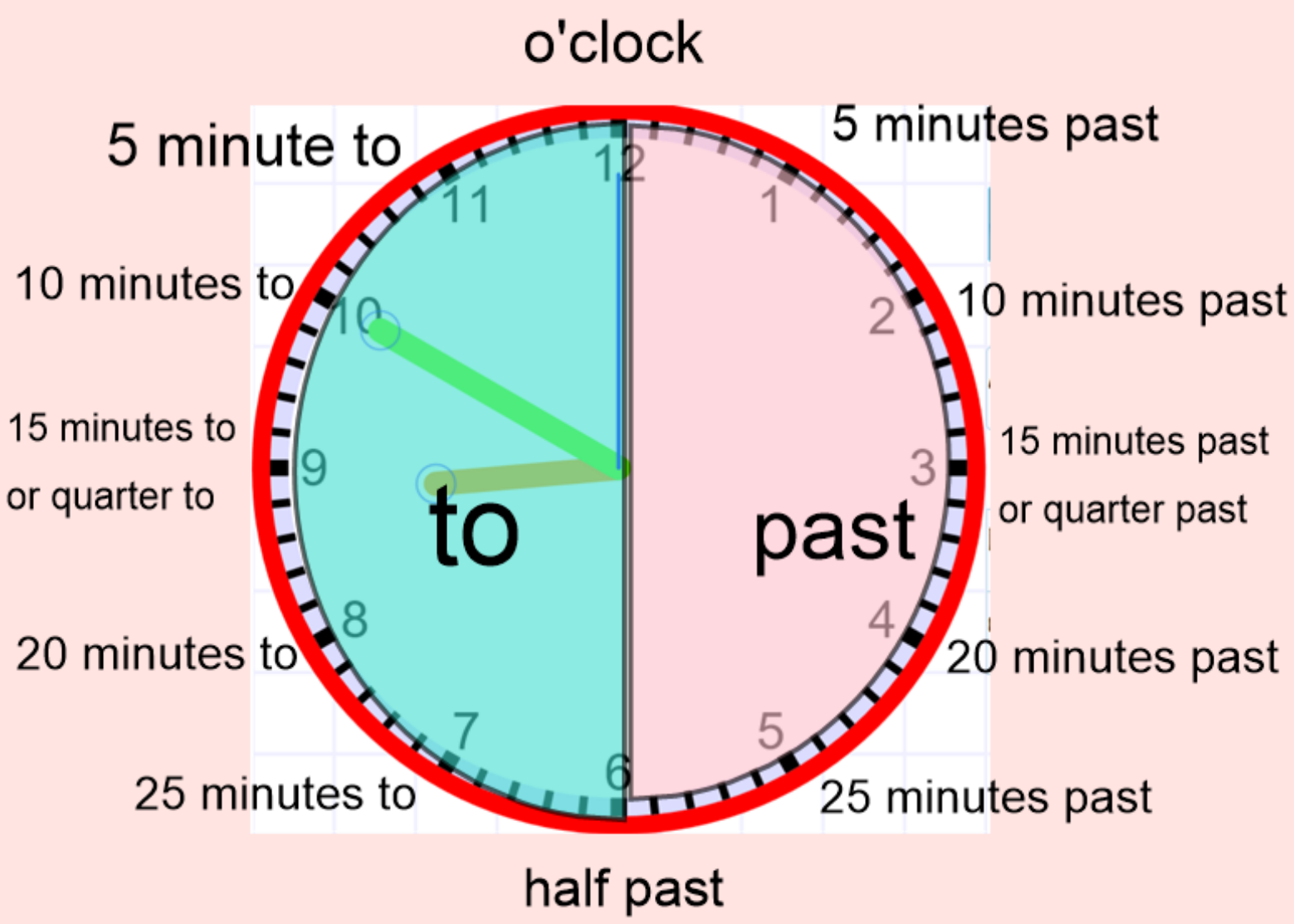


blue= to

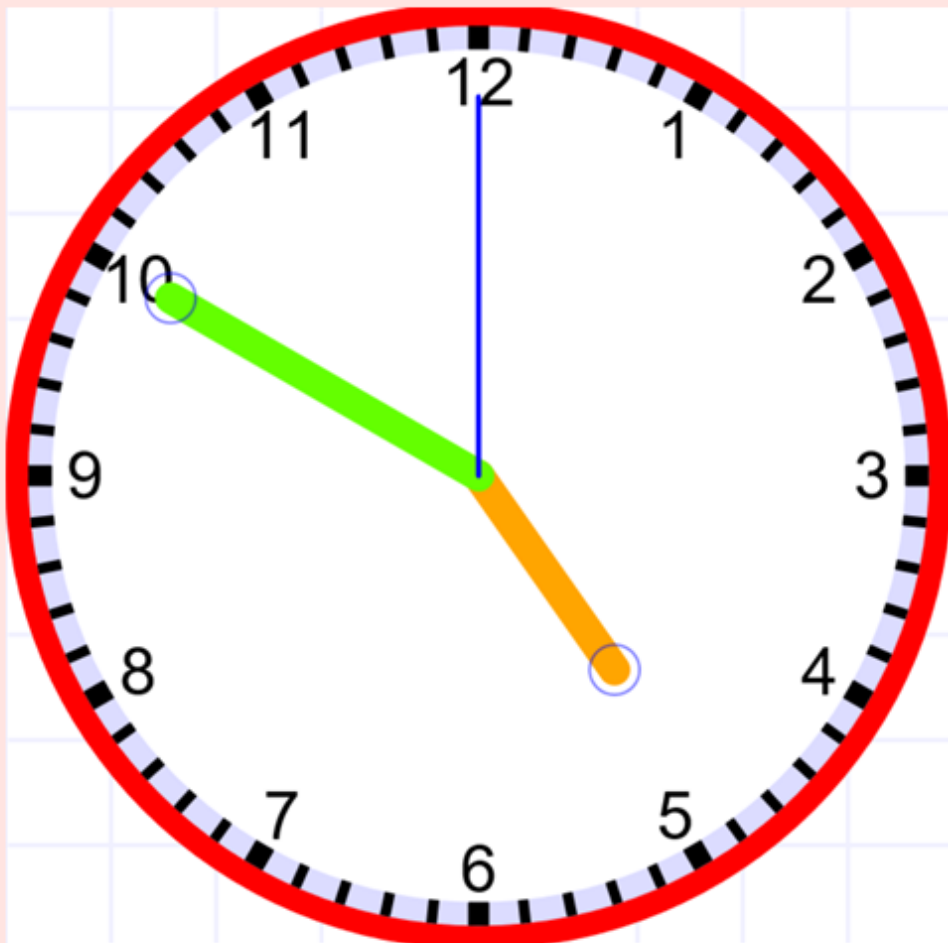
pink=past

When the minutes hand has gone past the 6 we are looking at how many minutes **to** (until) the next hour.

The two sides are like a mirror image.

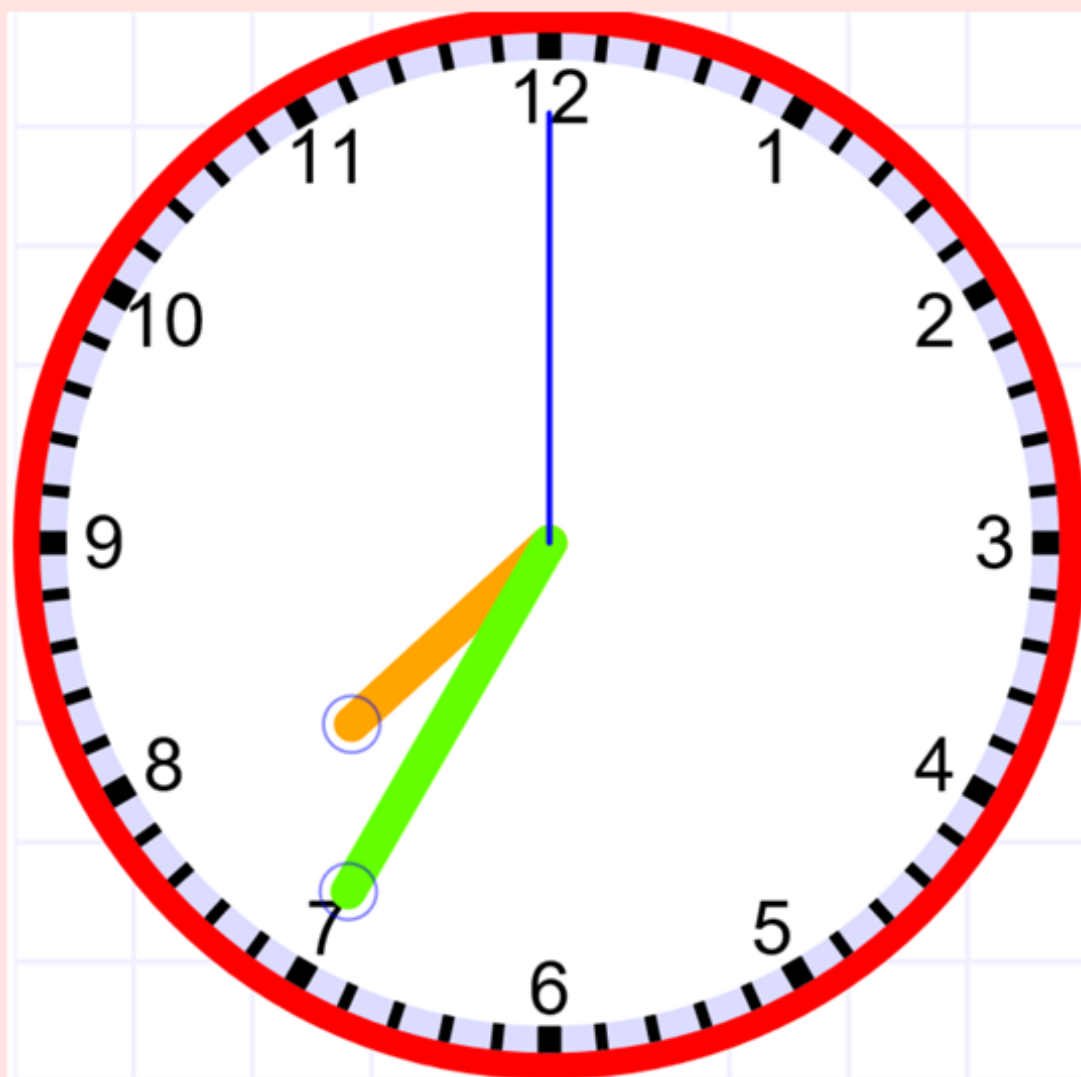


How many minutes to (until) the next hour?



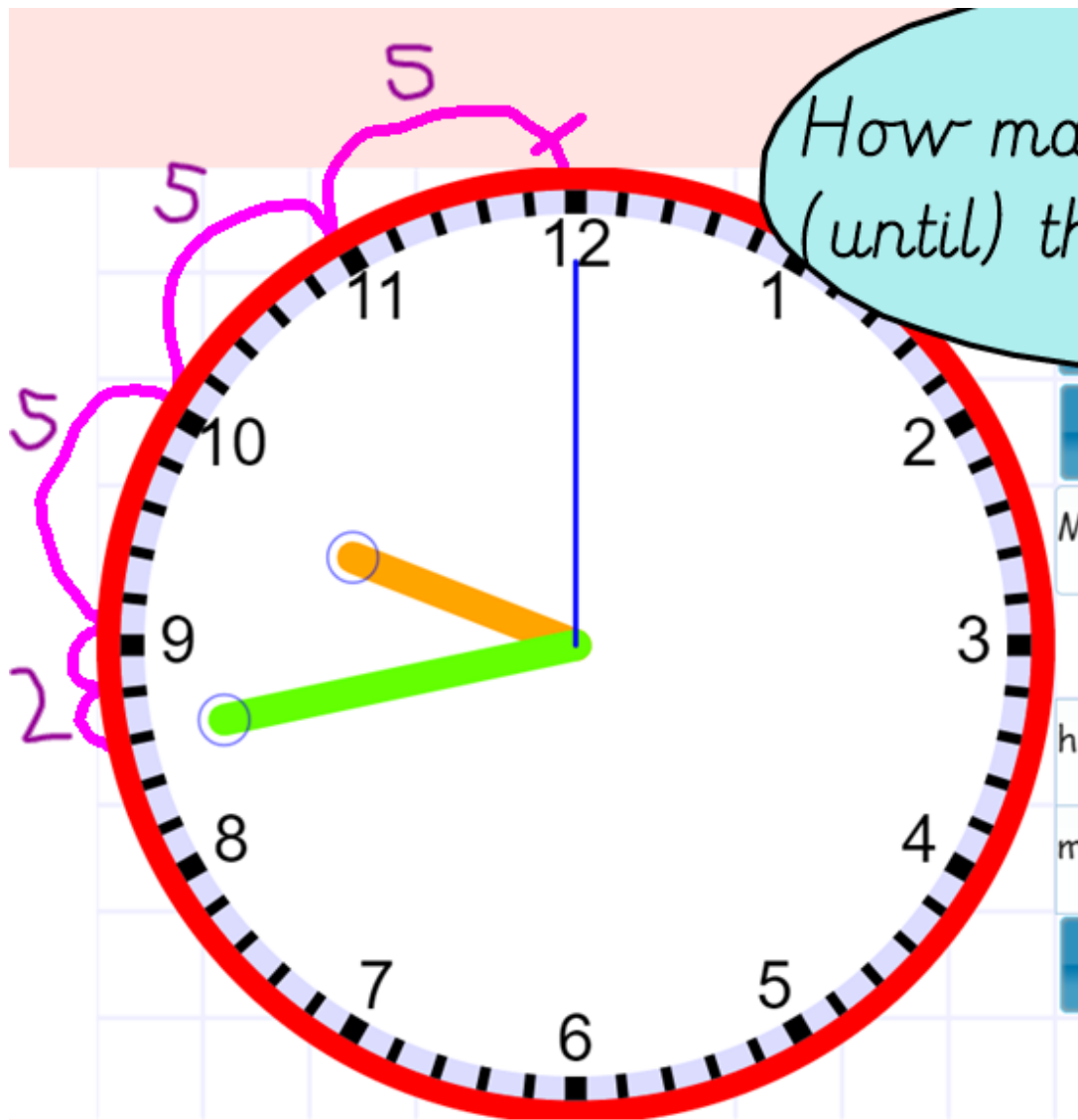
\_\_\_\_\_ minute to \_\_\_\_\_

How many minutes to (until) the next hour?



\_\_\_\_\_ minute to \_\_\_\_\_



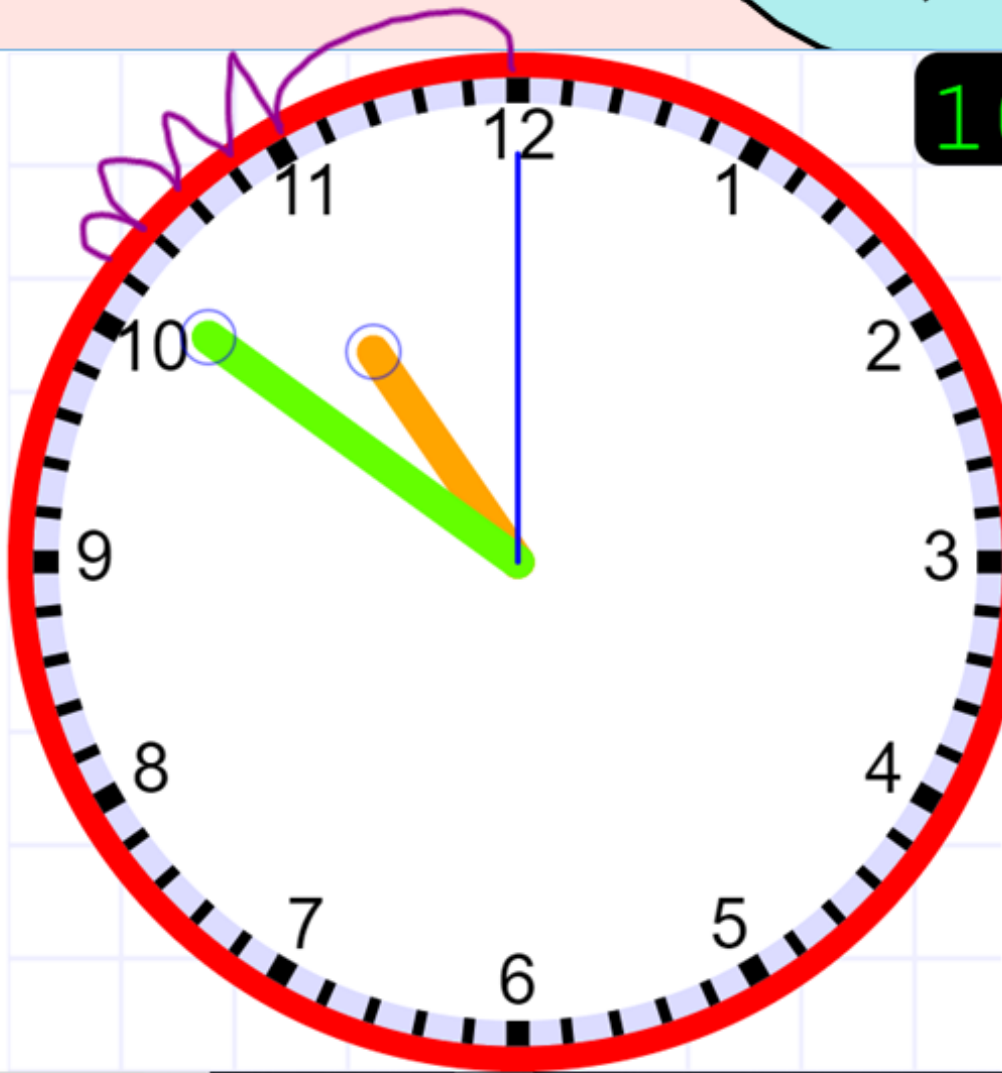


How many minutes to (until) the hour?

First, count how many minutes to a number. Then count back in 5's.

$$2 + 5 + 5 + 5 = 17 \text{ minutes to } 10$$

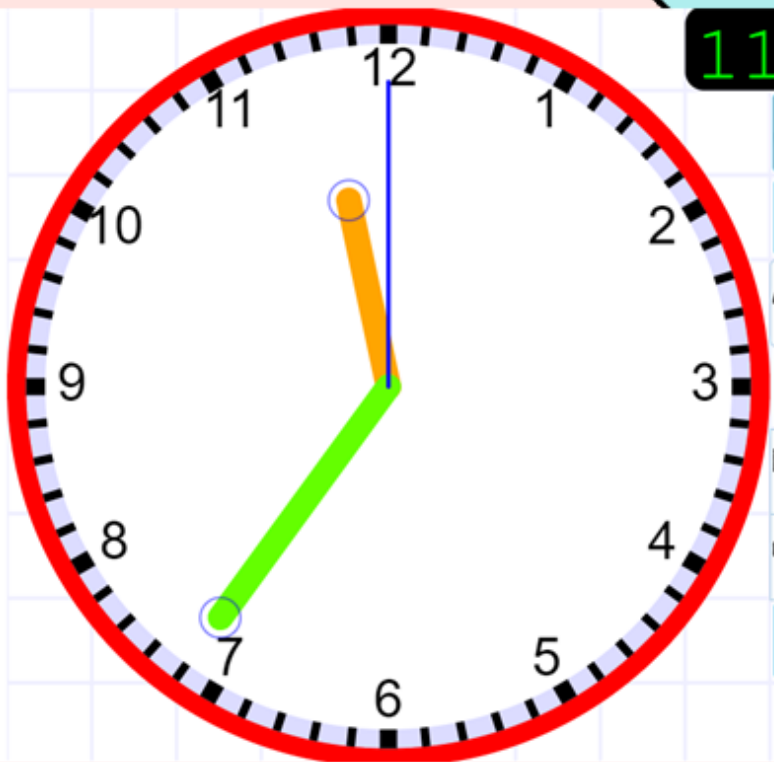
How many minutes to  
(until) the hour?



1

How many minutes to  
(until) the hour?

11



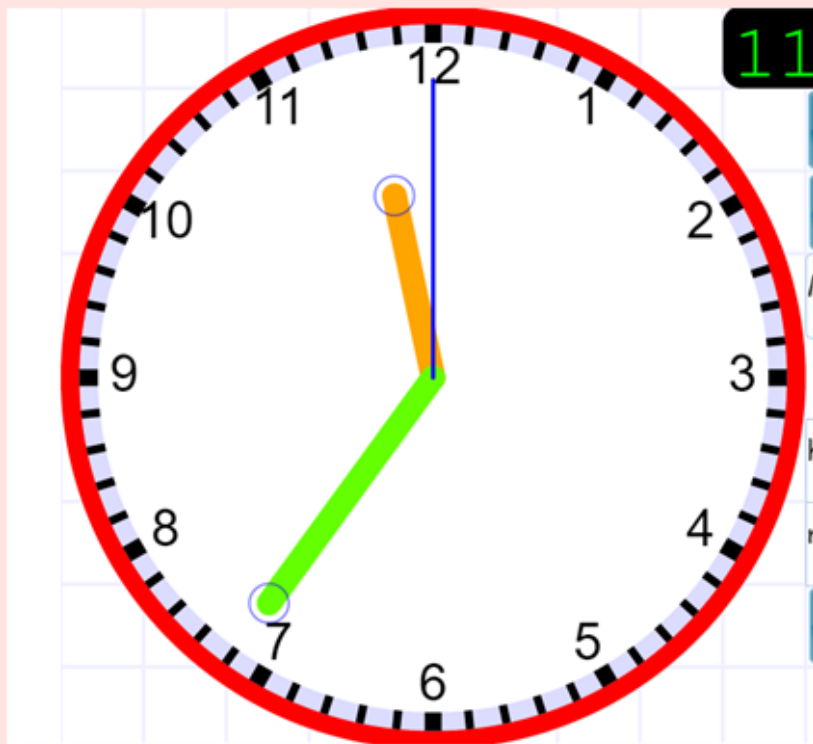
<https://www.visnos.com/demos/clock>

Use this clock and go and test yourself.

When you are ready, move onto the Maths  
gold worksheet.

[Extend Page](#)

challenge question:



Tom thinks it is  
26 minutes until 12.

Is he right?

Extra challenge:

Complete the statements.

$$1 \text{ day} = 24 \text{ hours}$$

$$\text{___ days} = 120 \text{ hours}$$

$$2 \text{ days} = \text{___ hours}$$

$$\text{___ days} = 60 \text{ hours}$$

$$\text{___ days} = 240 \text{ hours}$$

$$20 \text{ days} = \text{___ hours}$$

*What method will you use to  
work this out?*

Link for interactive clock:

<https://www.visnos.com/demos/clock>

Also, go on YouTube and find some videos on time to help you too!