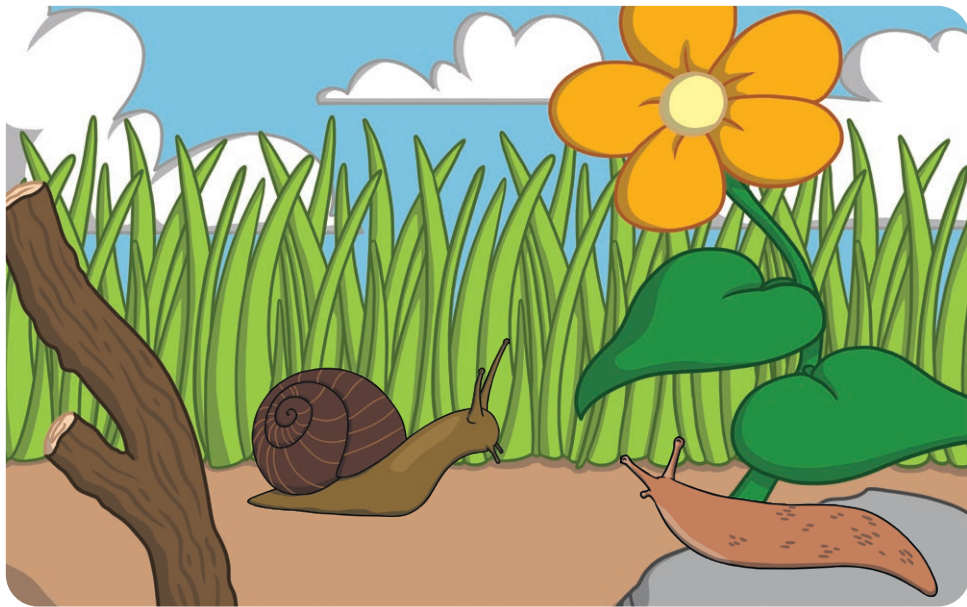


Slugs and Snails

- 9 • Slugs do not have a shell but snails do.
- 17 • Slugs and snails are molluscs just like clams
- 19 and squid.
- 28 • You can spot slugs and snails on land, in
- 33 trees or under the soil.
- 42 • Slugs and snails have a foot that helps them
- 45 to plod along.
- 52 • Slugs and snails munch on plants. Slugs
- 57 might munch on snails, too.



Read Together Quick Questions



1. Find and copy a phrase that means 'travel'.



2. What do both slugs and snails munch on? Tick one.

- ☐ clams
☐ plants
☐ snails



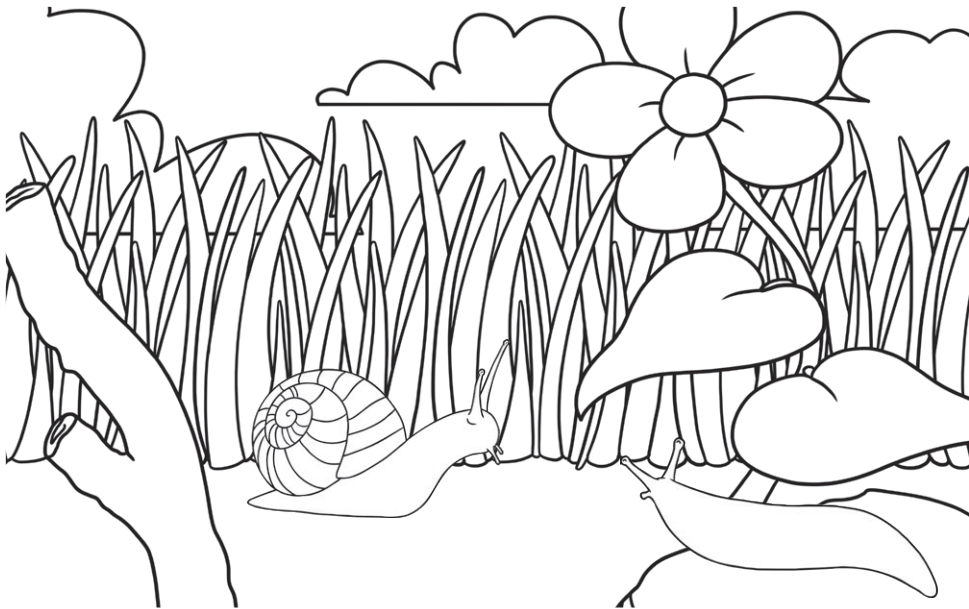
3. What is the first fact that you find out in this text?



4. Why might it be hard to spot some slugs and snails?

Slugs and Snails

- 9 • Slugs do not have a shell but snails do.
- 17 • Slugs and snails are molluscs just like clams
19 and squid.
- 28 • You can spot slugs and snails on land, in
33 trees or under the soil.
- 42 • Slugs and snails have a foot that helps them
45 to plod along.
- 52 • Slugs and snails munch on plants. Slugs
57 might munch on snails, too.



Read Together Quick Answers



1. Find and copy a phrase that means 'travel'.
plod along



2. What do both slugs and snails munch on? Tick one.

- ☐ clams
☒ **plants**
☐ snails



3. What is the first fact that you find out in this text?

Pupils' own responses, such as: The first fact that you find out in this text is that slugs do not have a shell.



4. Why might it be hard to spot some slugs and snails?

Pupils' own responses, such as: It might be hard to spot some slugs and snails because they are hidden in trees or under the soil.