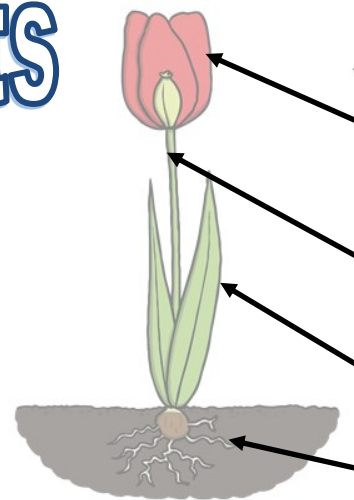
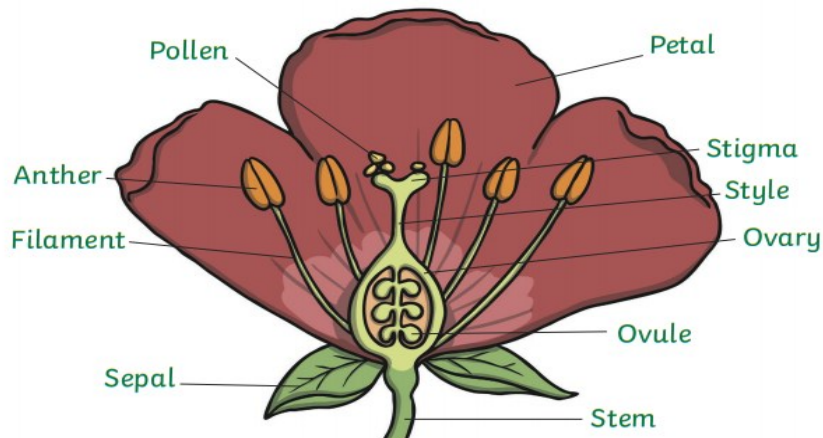


Year 3 Plants

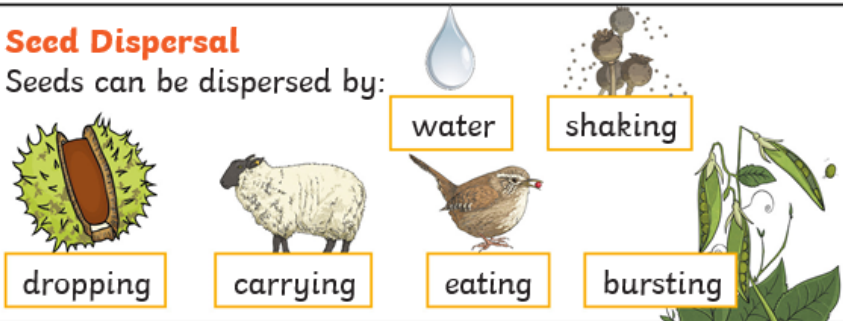
Parts of a flower



| Part of plant | Function |
|---------------|---|
| flower | The part of a plant that blossoms. Flowers produce the seeds that can become new plants. Most plants, including many trees, grow some kind of flower. |
| stem | This holds the plant up and carries water and nutrients from the soil to the leaves. |
| leaves | These make food for the plant using sunlight and carbon dioxide from the air. |
| roots | These anchor the plant into the ground and absorb water and nutrients from the soil. |

Seed Dispersal

Seeds can be dispersed by:



What Does a Plant Need to Grow?



Water



Light



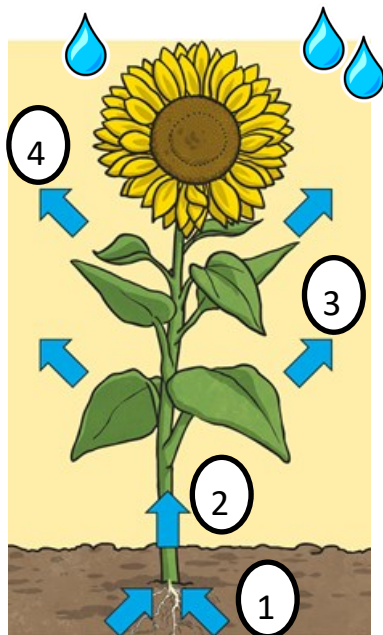
Food and nutrients from soil



Air



Room to grow



Water transportation

1. Roots **absorb** water from the soil
2. Stem **transports** water to the leaves
3. Water **evaporates** from the leaves
4. Evaporation causes more water to be **sucked up** the stem

Vocabulary

Definition

nutrients



These substances are needed by living things to grow and survive.

fertilisation



When the male and female parts of a flower have mixed in order to make seeds for new plants.

pollination



The act of transferring pollen grains from the male anther of a flower to the female stigma.

germination



When a seed starts to grow.

seed dispersal



The movement, spread or transport of seeds away from the parent plant.